

# EDITOR'S CHOICE

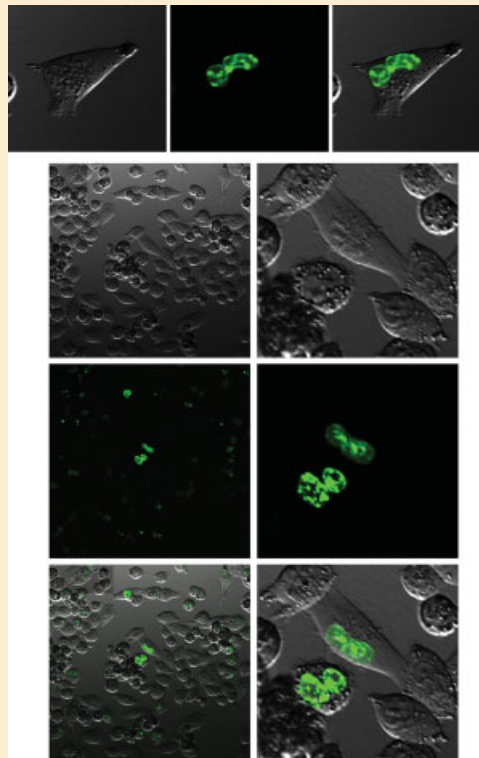
VOLUME 116 • NUMBER 4

## Real-Time Fluorescence Imaging of the DNA Damage Repair Response During Mitosis

*Shinji Miwa, Shuya Yano, Mako Yamamoto, Yasunori Matsumoto, Fuminari Uehara, Yukihiro Hiroshima, Makoto Toneri, Takashi Murakami, Hiroaki Kimura, Katsuhiko Hayashi, Norio Yamamoto, Elena V. Efimova, Hiroyuki Tsuchiya, and Robert M. Hoffman*

661

ACCEPTED MANUSCRIPT ONLINE 22 NOVEMBER 2014



Results presented by Miwa et al. suggest that DNA strand breaks occur during mitosis and undergo repair, which may cause some of the mitotic cells to enter apoptosis in a phenomenon possibly related to mitotic catastrophe.